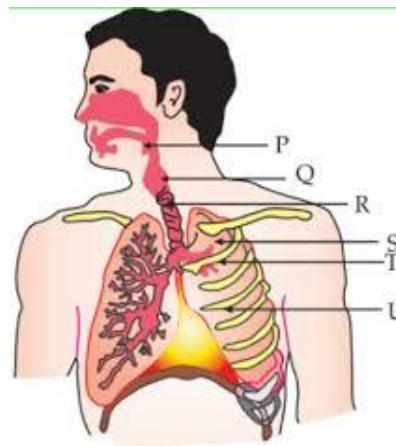
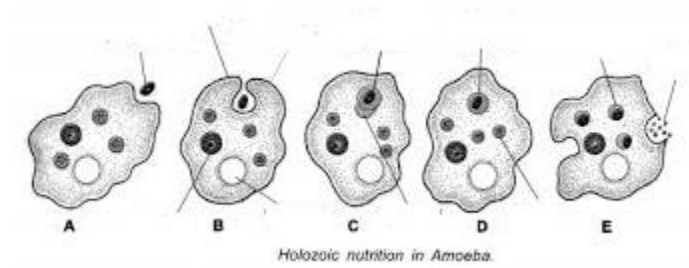


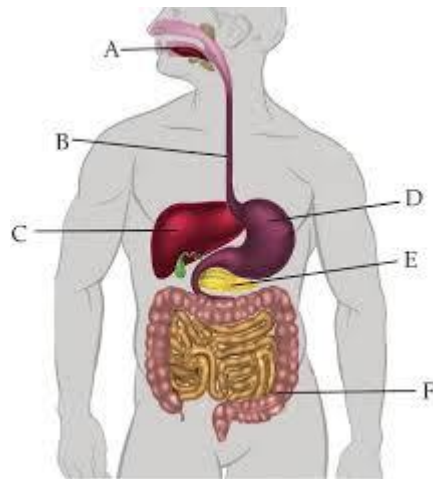
HOLIDAY HOME WORK

CLASS X

SUBJECT- BIOLOGY

I. Label the following diagrams.





II- Multiple choice questions.

1. Which of the following statements about the autotrophs is incorrect?

- (a) They synthesise carbohydrates from carbon dioxide and water in the presence of sunlight and chlorophyll
- (b) They store carbohydrates in the form of starch
- (c) They convert carbon dioxide and water into carbohydrates in the absence of sunlight
- (d) They constitute the first trophic level in food chains

2. In which of the following groups of organisms, food material is broken down outside the body and absorbed?

- (a) Mushroom, green plants, Amoeba
- (b) Yeast, mushroom, bread mould

(c) Paramecium, Amoeba, Cuscuta

(d) Cuscuta, lice, tapeworm

3. Select the correct statement

(a) Heterotrophs do not synthesise their own food

(b) Heterotrophs utilise solar energy for photosynthesis

(c) Heterotrophs synthesise their own food

(d) Heterotrophs are capable of converting carbon dioxide and water into carbohydrates

4. Which is the correct sequence of parts in human alimentary canal?

(a) Mouth → stomach → small intestine → oesophagus → large intestine

(b) Mouth → oesophagus → stomach → large intestine → small intestine

(c) Mouth → stomach → oesophagus → small intestine → large intestine

(d) Mouth → oesophagus → stomach → small intestine → large intestine

5. If salivary amylase is lacking in the saliva, which of the following events in the mouth cavity will be affected?

(a) Proteins breaking down into amino acids

(b) Starch breaking down into sugars

(c) Fats breaking down into fatty acids and glycerol

(d) Absorption of vitamins

6. The inner lining of stomach is protected by one of the following from hydrochloric acid. Choose the correct one

(a) Pepsin

(b) Mucus

(c) Salivary amylase

(d) Bile

7. Which part of alimentary canal receives bile from the liver?

(a) Stomach

(b) Small intestine

(c) Large intestine

(d) Oesophagus

8. A few drops of iodine solution were added to rice water. The solution turned blue-black in colour. This indicates that rice water contains

(a) complex proteins

(b) simple proteins

(c) fats

(d) starch

9. In which part of the alimentary canal food is finally digested?

(a) Stomach

(b) Mouth cavity

(c) Large intestine

(d) Small intestine

10. Choose the function of the pancreatic juice from the following

(a) trypsin digests proteins and lipase carbohydrates

(b) trypsin digests emulsified fats and lipase proteins

(c) trypsin and lipase digest fats

(d) trypsin digests proteins and lipase emulsified fats
